

Quality is controlled by

Team	Young organization with a team-versatile to handle critical components for machine makers.
Machine shop	CNC and automatic machine are considered as essential, so are installed since long, at our end.
Material	Good quality start with tested material, leads to perfect results after heat treatment.
Toolings	Proven toolings with LICENSEE hobs, to ensure correct tooth profile.
Inspection	We believe, not only instruments, but also jigs, fixtures and gauges, is essential.

So is exported...

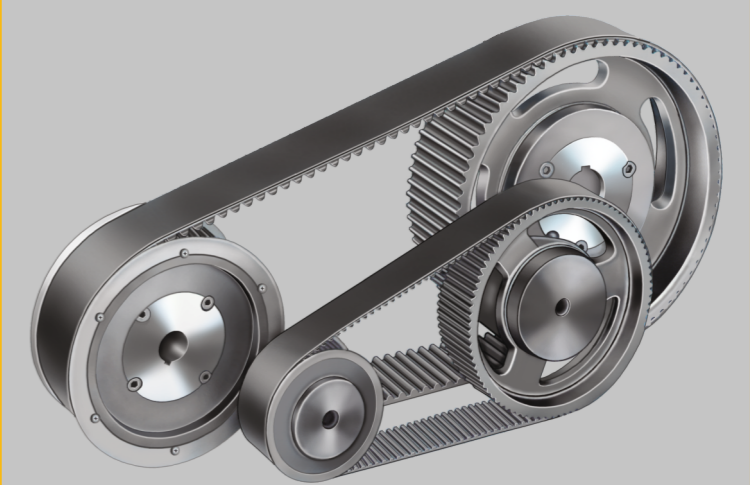


PRECISION + SPEED

supremeengineer.com



SUPREME
ENGINEERS



LOCATION MAP



NO-22, DRIVE-IN TENEMENTS,
BEHIND DRIVE-IN CINEMA,
OPP: GOYAL RAW HOUSE,
AHMEDABAD-380 054.
(GUJARAT - INDIA)

Cell : +91-9825088388

Fax : +91-79-30128800

E-mail: pulley007@gmail.com

Optional : pulley007@ymail.com

SUPREME
ENGINEERS

Application and type :

Universal Joint Provide a simple method to connect two shafts, whose axes are inclined at an angle. Extendable type joints are used, when the angle varies during rotation. (Shaft is moving up & down)

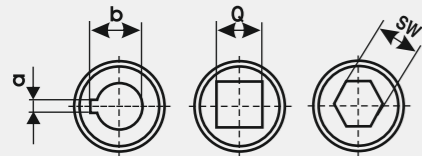
Advantage :

Misalignment between two Coupled Shaft, would not only damage the coupling but also damage the bearing and the total drive system's failure,

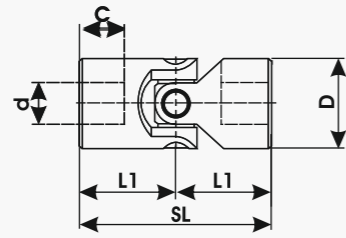
While Universal joint absorb the misalignment and save the Drive System.

Thus Universal Joints avoid the need of precise alignment & reduce the assembly cost.

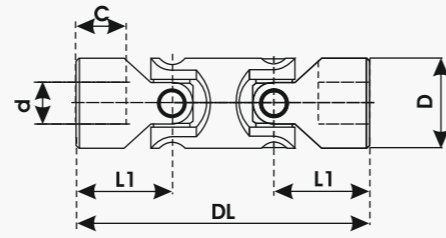
Finish bores :



Precision single joint S

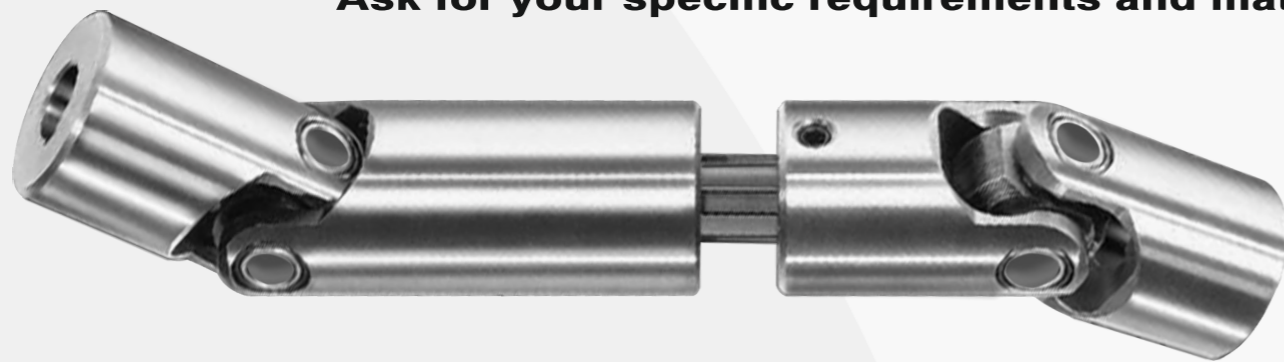


Precision double joint DL



DIA	BORE	SINGLE	DOUBLE	C	L1	a	b
D	d	SL	DL				
20	10	60	90	12	30	3	11.4
25	12	70	105	14	35	4	13.8
30	14	80	120	16	40	5	16.3
35	16	90	135	18	45	6	18.3
40	18	100	150	20	50	6	20.8
45	20	110	165	23	55	6	22.8
50	22	114	175	26	57	6	24.8
55	25	124	195	30	62	8	28.3
60	28	136	210	32	68	8	31.3
65	30	144	225	34	72	10	33.3
70	35	156	245	36	78	10	38.3

Ask for your specific requirements and material.



Application :

Positive drive - Ideal for Indicating, Counting and Synchronizing Drive System.

Advantage :

Timing belt drive combines the advantages of geared, chain and V-belt drive, while eliminates the troubles of above drives.

Range :

It covers the range from 0.1 to 120 HP and 100 to 10000 RPM.

Material :

Metal - En 8, Casting Aluminium, SS 316, Non metal - Nylocast, Fiber, Derlin.

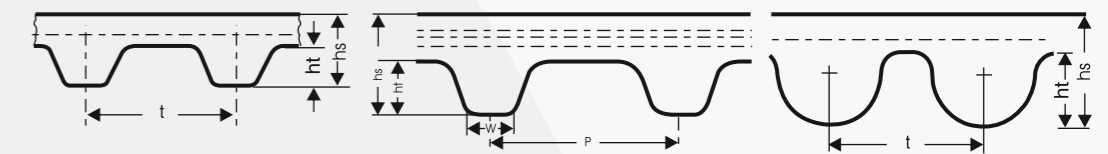
COMPARISON :

DRIVE FACTORS	CHAIN	V-BELT	GEARS	TIMING BELT	FLAT
SLIPPAGE & BACKLASH	COMP.	HIGH	MED.	NIL	HIGH
NOISE & VIBRATION	HIGH	MED.	HIGH	LOW	MED.
SPACE & WEIGHT	MORE	MORE	MORE	LESS	MORE
REQUIRE LUBE SYSTEM	YES	NO	YES	NO	NO

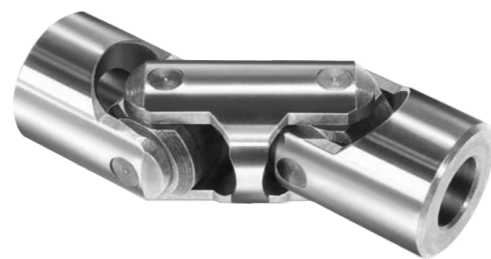
CLASSIFICATION & PROFILE :

Timing	Pitch	ht	hs	Synco	Pitch	ht	hs	HTD	Pitch	ht	hs
MXL	2.03	0.51	1.14	T 2.5	2.5	0.70	1.30	3M	3	1.2	2.4
XL	5.08	1.27	2.3	T 5	5	1.20	2.20	5M	5	2.1	3.6
L	9.52	1.90	3.6	T 10	10	2.50	4.50	8M	8	3.4	5.6
H	12.70	2.29	4.3	T 10 SE	10	3.40	4.50	14M	14	6.1	10.0
XH	22.22	6.35	11.2	T 20	20	5.00	8.00	20M	20	9.0	13.2

POLYCHAIN
POWERGRIP Gt2



LOCK-PIN TYPE



for standard application and economical

BALL TYPE



for heavy load (slow RPM)
easy to install & remove

BEARING TYPE



Medium torque with higher RPM and smooth drive

POLYCHAIN



NYLON+SS 316

HTD TAPERLOCK



NO RUNOUT

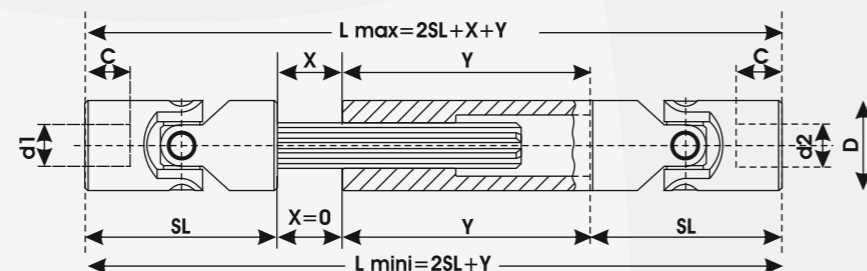
ALLUMINIUM



WITH KEYLESS

EXTENDABLE TYPE

FOR bridging of bigger shaft distances



DESIGN DATA :

Center Distance : Desired : _____ Mini : _____ Maxi : _____
 Ratio / Speed : Desired : _____ Mini : _____ Maxi : _____
 HP / KW / Load : Connected : _____ Normal : _____ Peak : _____
 Fixed Centers : Yes / No : _____ (Is Idler Acceptable)